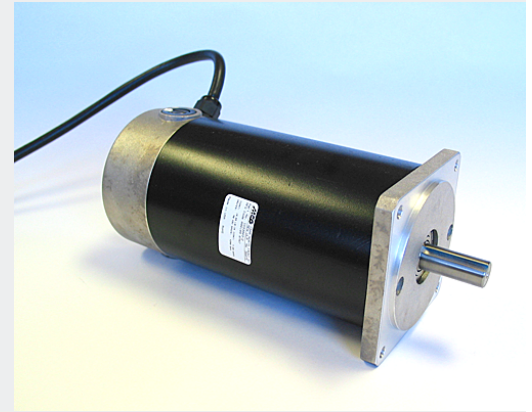
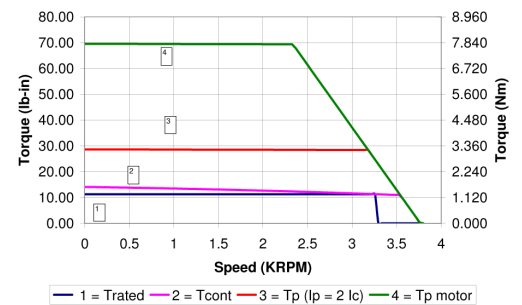


- Designed with low and medium Ke's to accommodate low and medium bus voltage applications
- Voltage rating up to 90 Vdc
- TENV and IP40 environmental construction
- Dynamically balanced armatures
- Compact, optical encoders (optional)
- External NEMA 34 24Vdc holding brake (optional)
- Precision servo gearing (optional)

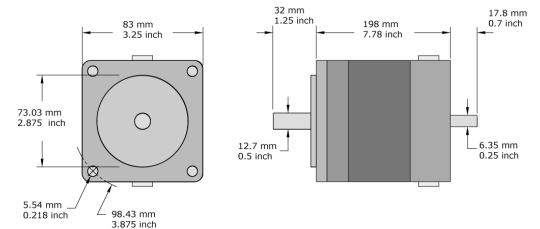
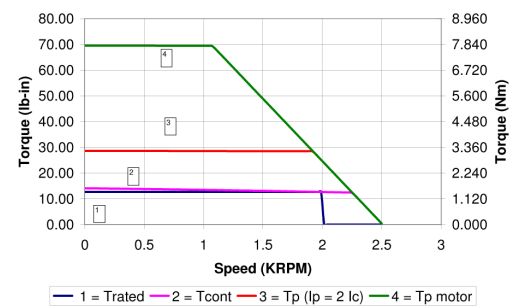


Ratings	Symbol	Units	
Continuous Stall Torque	Tcs	1.593 (14.10)	Nm (lb-in)
Peak Stall Torque	Tps	7.944 70.30	Nm (lb-in)
No Load Max. Speed	ω_{nl}	6000	RPM
Continuous Rated Torque	Tcr	1.333 (11.80)	Nm (lb-in)
Peak Rated Torque	Tpr	2.667 (23.60)	Nm (lb-in)
Rated Speed	ω_{rated}	3200	RPM
Rated Power	W (HP)	447 (0.60)	Watts (HP)
Inductance L-L	L	2.76	mH
Resistance L-L	R	0.87	ohms
Max. Terminal Voltage	V dc	90	Vdc
WINDING			
SINUSOIDAL AC VALUES			
Current at Cont. Stall Torque, o-p	A rms	0.00	Amp
Current at Peak Torque, o-p	A peak	0.00	Amp
Torque Constant L-L	Kt rms	0.000 (0.00)	Nm/A rms (lb-in/A)
Voltage Constant L-L	Ke rms	0.00 (0.00)	V/rad/sec (V/kRPM)
TRAPEZOIDAL DC VALUES			
Current at Cont. Stall Torque, o-p	A dc	8.56	Amp
Current at Peak Torque, o-p	A dc	38.80	Amp
Torque Constant L-L	Kt dc	0.227 (2.01)	Nm/A (lb-in/A)
Voltage Constant L-L	Ke dc	2.492 (23.80)	V/rad/sec (V/kRPM)
MECHANICAL			
Max. Axial Shaft Load	Fa	44.48 (10.00)	N (lb)
Max. Radial Shaft Load	Fr	133.45 (30.00)	N (lb)
Motor Constant, L-L Trapezoidal	Km	0.20 (1.73)	Nm/ \sqrt{w} (lb-in/ \sqrt{w})
Motor Inertia	Jm	0.00044522 (0.0039400)	Kg-m ² (lb-in-s ²)
Motor Weight		4.763 (10.50)	Kg (lb)
Thermal Resistance	Rth	1.35	°C/Watt
Thermal Time Constant	TTC	28.00	min
Max. Winding Temperature	Tw	155	°C

ID33004 @ 90 Vdc



ID33004 @ 60 Vdc



MOTION CONTROL GROUP

888-624-3478 (U.S. & Canada)
+1 507-233-7000 (All other countries)
www.motioncontrolgroup.com
sales@motioncontrolgroup.com

Configure Order Number

GEAR BOXES					BRAKE		MOTOR						FEEDBACK				
					-		-	I	D						-		

Standard motor assemblies can be configured using the catalog number format above and motor options listed below.

Motor options are typically stocked as separate components and can be quickly assembled to order.

Cables and connector kits are motor accessories and ordered as separate items.

Examples of configured motor assemblies:

G3010-ID23000-H1 - ID23000 Motor, G3010 10:1 Gearbox and 500 Line Encoder, 5 Vdc 3 Ch

B5-ID33002-Q1 - ID33002 Motor, B5 Brake and 1000 Line Encoder, 5 Vdc 3 Ch w/ LD

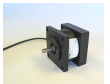
Contact MCG for any required special features not listed here.

MOTOR OPTIONS

Brakes

Holding Brakes - Eternal "Bolt-On" Mounting

B5 15 lb-in Brake, 24 Vdc, NEMA 34 w/ 1/2 inch output shaft



Feedback

Incremental Encoders - Bearing Type Spring Mounting

Q1	1000 Line	Encoder, 5Vdc, 3 channel w/ Line Driver
Q2	500 Line	Encoder, 5Vdc, 3 channel w/ Line Driver
Q3	2000 Line	Encoder, 5Vdc, 3 channel w/ Line Driver
Q4	2048 Line	Encoder, 5Vdc, 3 channel w/ Line Driver
Q5	2500 Line	Encoder, 5Vdc, 3 channel w/ Line Driver
Q8	5000 Line	Encoder, 5Vdc, 3 channel w/ Line Driver



Encoder Cover

-7 Encoder cover

MOTOR ACCESSORIES

Cables & Connectors

Cables - Power and Feedback

FE-10	10 Ft	Encoder Feedback Cable, 8 contact, 24AWG
FE-25	25 Ft	Encoder Feedback Cable, 8 contact, 24AWG



Connector Kits - Power and Feedback

9700522 Mating Encoder Connector Kit, body and 8 crimp contacts (FE)



MOTION CONTROL GROUP

888-624-3478 (U.S. & Canada)
 +1 507-233-7000 (All other countries)
www.motioncontrolgroup.com
sales@motioncontrolgroup.com